

### About SSIS

- Founded in 1996, the oldest international school in Suzhou
- Private international school serving the expatriate community
- Co-educational non-selective day school
- IB continuum school
- English as the language of instruction
- Maximum class size of 22
- Teacher student ratio 1:9

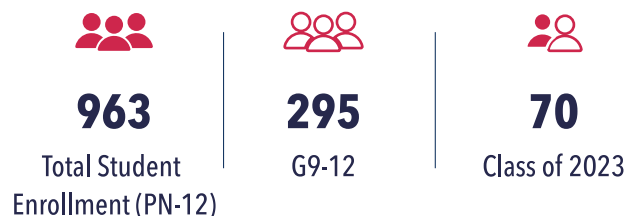
Ranked 1st in Jiangsu and 20th in China in the 2022 Hurun Education Top International Schools in China

### Mission & Vision

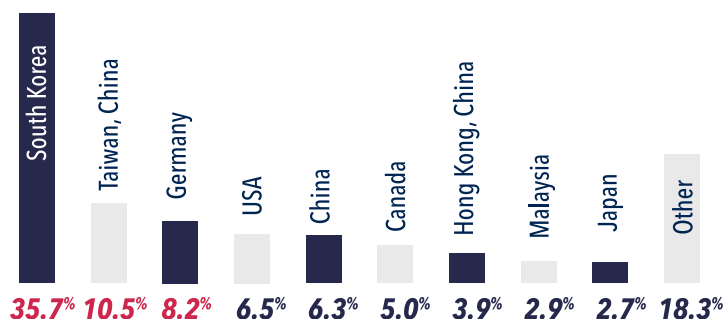
Our mission is to provide an excellent international education to the children of expatriate families.

Our vision is to encourage and enable each of our students to be self-motivated lifelong learners who value other cultures and are responsible, meaningful participants in the international community.

### Enrollment



### Place of origin represented in SSIS student body



### Strengths of an SSIS student

- Self-confident, open-minded, and globally aware
- Understands the value of community cooperation
- Bilingual or often trilingual
- Willing to question and demonstrate leadership
- Fully active in social service

### Faculty



### University advising policies

- Maximum of 10 applications worldwide allowed. This ensures that students have done their research and that an application from an SSIS student is a carefully considered decision
- All recommendations are confidential
- Class rank is not calculated
- Only subjects completed in G9-12 at SSIS are included in the GPA. All subjects are unweighted
- SSIS reports student disciplinary infractions related to academic integrity that result in external suspension or expulsion to institutions requesting this information
- All Grade 11 and 12 students have a University Prep class bi-weekly with their assigned University Counsellor, to allow for students to transition smoothly from high school to their post-secondary studies

### Accreditation & Memberships



Head of School:  
**Samer Khouri**

Secondary School Principal:  
**Lucy Burden**

Assistant Principals  
**Richard Greaves/Steven Hawkins**

Diploma Coordinator  
**Cormac Delahunty**

University Counsellors

**Sandra Jung** | sandrajung@mail.ssis-suzhou.net

**Elizabeth Watson** | elizabethwatson@mail.ssis-suzhou.net

**Bob Zhang** | bobizhang@mail.ssis-suzhou.net

## Curriculum

---

### **Middle Years Programme (MYP) Grades 6–10**

All SSIS students undertake the MYP. In Grades 9 & 10, students study eight subjects each year. The core subjects are: Language and Literature (Chinese, English, German, Japanese & Korean); Language Acquisition (Chinese, English, French, & Spanish); Mathematics; Sciences; Humanities; Physical Education; Arts (Drama, Music, & Visual Arts); and Design (Digital, Food, & Materials). In G10, students complete the MYP Personal Project outside of class time. This project develops independent learning and research skills, as well as critical reflection.

### **International Baccalaureate Diploma Programme (IBDP) Grades 11&12**

The IBDP is a two-year course during which students must complete six subjects. Three subjects are at Higher Level (240 class hours per HL course) and three subjects are at Standard Level (150 class hours per SL course). In addition, students must also fulfill the IBDP Core requirements of the Theory of Knowledge (TOK) course and the Extended Essay (EE). They must also fulfill Creativity, Activity and Service (CAS) commitments outside of class time. The vast majority of Grade 11-12 SSIS students are full IB Diploma candidates; only a few are IB course candidates.

- Both programs focus on engaging and challenging students academically along with developing attributes associated with personal well-being and a genuine care and concern for others in the local, national and global community.
- All students graduate with an SSIS High School Diploma, accredited by NEASC.
- All students are encouraged to take the most challenging subjects in which they can be academically successful.
- The academic year is 180 days divided into two semesters, with an interim and a final grade reported on the transcript.

*Note: Due to COVID-19 restrictions in China, the SSIS campus was closed to all students from 13 February to 13 May 2022. All lessons were conducted remotely during this period. Students engaged in a range of learning experiences: many lessons were conducted using virtual platforms, Grade 12 students sat the IB mock exams in their homes and staff were available for individual consultation at all times. There were no school-based extra-curricular activities for any students during this period.*

## Extracurricular Activities

---

SSIS believes that activities outside of the classroom are integral to a student's holistic development and wellbeing. We want our students to develop self-agency and the necessary skills to interact with others and with the world. To this end, we provide an inclusive and balanced extracurricular program (ECP) that is in keeping with our school mission. Our students are expected to fully participate in our ECP, exploring new interests and developing new skills. Students are encouraged to pursue their passions and may establish new clubs when there is sufficient interest.

Students partake in athletics (e.g. swimming, tennis, volleyball, track and field); leadership (e.g. student council, yearbook, MUN); performance (e.g. drama productions, taiko drumming; orchestra; rockband); community service (e.g. Heart2Heart Shanghai, the Million Tree Project, Paws4Cause, TangMama) and activities such as robotics and videography. In Grade 11 and 12 service programs are usually student-initiated and led. As of August 2022, SSIS is offering the Duke of Edinburgh Award.

SSIS participates annually in athletic and non-athletic competitions held by the Association of China and Mongolia International School (ACAMIS), in sporting competitions held by the China International Schools Sports Association (CISSA), and Shanghai International School Athletic Conference (SISAC), and musically in the International Schools Choral Music Society (ISCMS).

*Note: Since February 2020, the holding of intermural competitions has been limited due to Covid19. Similarly, pre-pandemic, our students undertook volunteer work in countries such as South Africa, Sri Lanka and Nepal. It is hoped that more opportunities will be available in AY2022– 2023 and beyond.*



# Class of 2022



IBDP : **60** students

**100%** pass rate

**85.85%** world pass rate

**31.98**

World average

**38**

SSIS average

**68.33%**

of students earned bilingual diplomas in English, Chinese, Korean, German, and Swedish

2 x **45**  
and

3 x **44**



**45%** of students scored over 40

Note: SSIS IB students were not able to sit the May 2022 exams.

■ SSIS Mean    ■ World Mean

Biology HL	4.73	5.67
Biology SL	4.56	5.12
Business Management HL	5.25	6.53
Business Management SL	5.11	6.44
Chemistry HL	4.99	6
Chemistry SL	4.54	5.55
Chinese A: Lang & Literature HL	5.78	6
Chinese A: Lang & Literature SL	5.75	5.67
Chinese B - Mandarin HL	6.28	7
Chinese B - Mandarin SL	5.8	6.86
Design Tech HL	4.89	5
Design Tech SL	4.62	4
Economics HL	5.4	7
Economics SL	5.02	6.83
English A: Lang & Lit HL	5.03	5.8
English A: Lang & Lit SL	5.27	5.72
English B HL	5.9	6.41
English B SL	5.76	6.4
French AB. SL	5	7
German A: Lang & Lit HL	5.57	5.5
German A: Lang & Lit SL	5.31	5.5
History HL	5	6
History SL	4.76	5
Japanese A: Literature HL	5.85	6
Korean A: Literature HL	5.93	6
Korean A: Literature SL	5.97	5.7
Mandarin AB. SL	5.46	7
Math Analysis & Approaches HL	5.21	5.89
Math Analysis & Approaches SL	4.99	5.85
Math Applications & Interpretations SL	4.39	5.44
Physics HL	5.09	6.18
Physics SL	4.64	4.67
Portuguese A: Literature self taught SL	5.78	6
Psychology HL	5.07	6.25
Psychology SL	4.8	6.3
Spanish AB SL	5.06	5.71
Sports Ex Sci HL	4.98	5
Sports Ex Sci SL	4.18	5.33

Swedish A: Literature self taught SL	5.39	7
Visual Arts HL	4.45	5.7
Visual Arts SL	4.1	6

## SAT

Mid 50th

2022

Reading & Writing

530-670

Maths

570-740

SSIS composite

1070-1360

2021

Reading & Writing

585-705

Maths

600-760

SSIS composite

1215-1430

2020

Reading & Writing

620-725

Maths

645-800

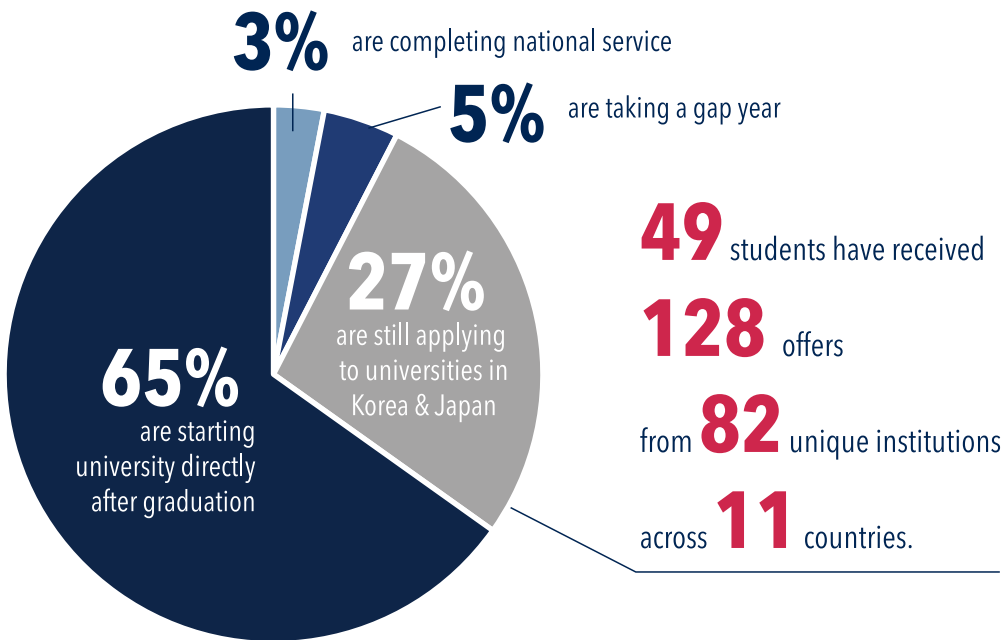
SSIS composite

1360-1530

SSIS offers the following external exams on site: IB SAT PSAT MAP

# University Matriculation 2018-2022

## Class of 2022 graduates



### ASIA

Chung-Ang University (2)  
 City University of Hong Kong (2)  
 East China University of Science & Technology  
 Hanyang University  
 International Christian University  
 International Medical University (2)  
**Keio University**  
**Korea Advanced Institute of Science & Technology (2)**  
 Korea Aerospace University  
**Korea University (3)**  
 Kyungpook National University  
 Monash University  
 Myongji University  
**Nanyang Technological University (4)**  
**National University of Singapore (9)**  
 Newcastle University Medicine Malaysia (2)  
 Osaka University  
 Seoul National University (7)  
**Singapore Management University (2)**  
 Sogang University (3)  
 Sophia University  
 Suzhou Centennial College  
 Sungkyunkwan University  
 Sungkyunkwan University, School of Medicine  
**The Chinese University of Hong Kong (2)**  
 The Hong Kong Polytechnic University (4)  
 The Hong Kong University of Science & Technology (5)  
**The University of Hong Kong (12)**  
 The University of Utah Korea Campus  
 University of Nottingham Malaysia  
 University of Nottingham Ningbo China

**Xi'an Jiaotong Liverpool University (5)**  
**Yonsei University (10)**  
 Waseda University (3)

### CANADA

OCAD University  
 Simon Fraser University  
**The University of British Columbia (6)**  
**University of Toronto (7)**

### EUROPE

American College of Greece  
**ArtEZ University of the Arts**  
 Bocconi University  
**Erasmus University Rotterdam (4)**  
**Hanze University of Applied Science**  
**Maastricht University**  
**The Hague University of Applied Sciences (2)**  
 University of Amsterdam (3)  
**University of Pecs**  
 University of Rijeka  
 University of Twente  
**Vrije University Amsterdam**

### OCEANIA

Deakin College  
 Royal Melbourne Institute of Technology  
 The University of Melbourne (2)  
**The University of Queensland (2)**  
**The University of Sydney**

### SOUTH AMERICA

Regional University of Blumenau

### UNITED KINGDOM

**Durham University**  
 Greater Brighton Metropolitan College  
 Hull York Medical School  
**Kingston University**  
**Leeds Arts University**  
 Leeds Trinity University  
**Loughborough University (3)**  
 The London School of Economics and Political Science  
**The University of Edinburgh (2)**  
 The University of Sheffield  
**University College London (4)**  
**University for the Creative Arts**  
 University of Hertfordshire  
**University of Liverpool School of Medicine**  
 University of Surrey  
**University of the Arts London**

### UNITED STATES

Arizona State University  
 Babson College  
 Berklee College of Music  
**Boston University (2)**  
 Elon University  
 Emory University  
 Hawaii Pacific University  
 Loyola Marymount University  
**Michigan State University (4)**  
 Minneapolis College of Art & Design  
 Mount Holyoke College  
 New York University (2)  
**Pasadena City College**  
 Rhode Island School of Design (2)  
 Rutgers University-New Brunswick  
 Savannah College of Art & Design  
 School of Visual Arts  
 Swarthmore College  
 The George Washington University  
 University of Arizona  
 University of California, Berkeley (2)  
 University of California, Irvine  
 University of California, Los Angeles  
 University of California, San Diego (3)  
 University of Cincinnati  
**University of Hawaii at Manoa**  
 University of Illinois at Urbana-Champaign  
 University of South Carolina  
 University of South Florida, Tampa  
 University of Washington  
 Wake Forest University

**Matriculations for the Class of 2022 are bolded**

Bracketed numbers indicate the number of graduates  
 Data as at October 2022, therefore not inclusive of most  
 Korean graduates who are awaiting application outcomes